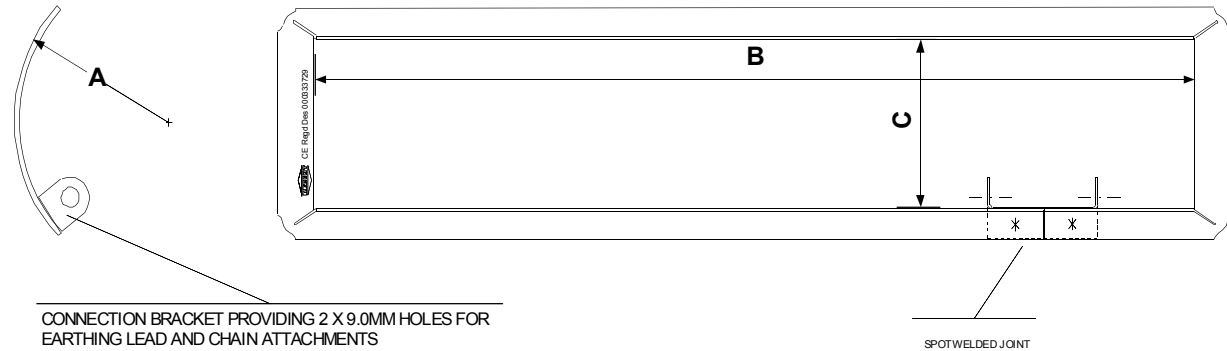
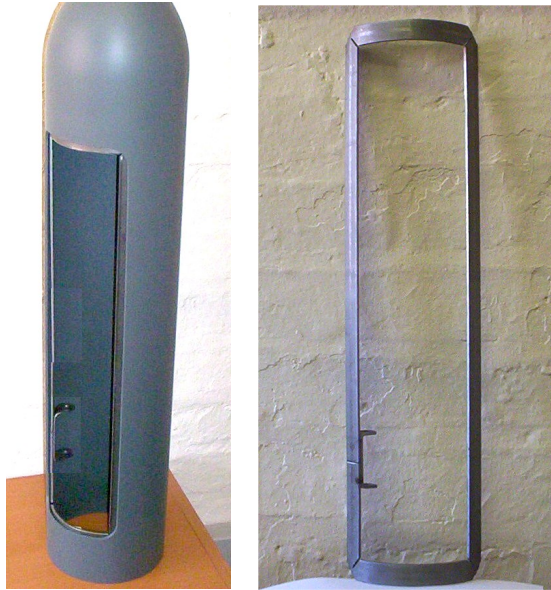


Product Data Sheet

INTERNAL FRAME
 Application : Flush fitting "Profiled" Door openings in Light-
 ing Columns and Illuminated Sign Posts



CONNECTION BRACKET PROVIDING 2 X 9.0MM HOLES FOR EARTHING LEAD AND CHAIN ATTACHMENTS

SPOTWELDED JOINT

Material - Low carbon Steel to EN 10130 FePo4 - 3mm Thick

Finish - Self Colour

All dimensions in Millimetres

Community Registered Design No.000333729

Regent Part No	Description	Dimn A Internal Ra- dius of Base	Dimn B	Dimn C
1191	INTERNAL FRAME 140Ø X 100L X 480W	67	480	100
1192	INTERNAL FRAME 140Ø X 115L X 480W	67	480	115
1193	INTERNAL FRAME 168Ø X 100L X 480W	67	480	100
1194	INTERNAL FRAME 168Ø X 100L X 580W	82	580	100
1195	INTERNAL FRAME 168Ø X 115L X 580W	82	580	115
1196	INTERNAL FRAME 194Ø X 100L X 480W	97	480	100
1197	INTERNAL FRAME 194Ø X 100L X 580W	97	580	100
1198	INTERNAL FRAME 194Ø X 115L X 580W	97	580	115

The Regent Engineering Co. (Walsall) Ltd Salisbury Street Darlaston Wednesbury West Midlands WS10 8XB UK

E-mail : info@regenteng.com

Web : www.regenteng.com

Phone 44 (0)121 526 6060

Fax : 44(0)121 526 4789

© 2012